



SINGLE AND DOUBLE-DOOR KITS

Reusable commercial-grade aluminum doors are available in multiple configurations for single and double door kits and are designed to accommodate locksets with 2 3/4" backset.

The doors include a commercial-lever type lockset. Interchangeable core locksets are available as an added option.

Our door kits include a left, right, and center top panel, door frame, threshold, and door, and are available in various swing options.

SPECIFICATIONS

Color: White

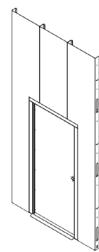
Material: 0.90 THK Aluminum

Door Options:

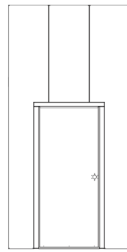
Single Door Left-Hand (Outswing / Inswing)	MW-SDLH-AL-120-W	117"	48"	153 lbs
Single Door Right-Hand (Outswing / Inswing)	MW-SDRH-AL-120-W	117"	48"	153 lbs
Double Door Right-Hand In-Swing	MW-DDRHI-AL-120-W	117"	96"	270 lbs
Double Door Right-Hand Out-Swing	MW-DDRHO-AL-120-W	117"	96"	263 lbs

DIAGRAMS

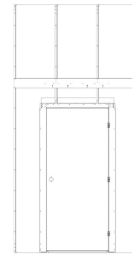
For a complete list of door kit configurations or a detailed view of the single and double-door options, please consult your *McCain Walls* representative or visit www.mccainwalls.com/resource-center.



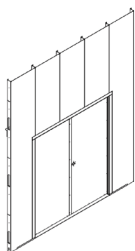
Single-Door Left-Hand
Inswing
(Angle View)



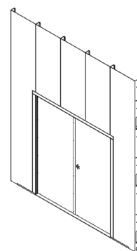
Single-Door Left-Hand
Inswing
(Front View)



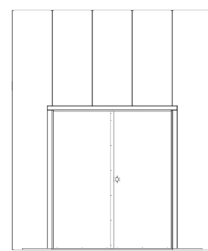
Single-Door Left-Hand
Inswing
(Back View)



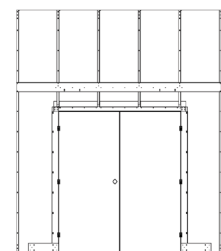
Double-Door Inswing
(Left-Angle View)



Double-Door Inswing
(Right-Angle View)



Double-Door Inswing
(Front View)



Double-Door Inswing
(Back View)